

MODEL 357



CO2 Cartridge is not included
12g
MADE IN TAIWAN

AAKCCD66-67-68系列說明書 AAKCCD66-67-68 INSTRUCTION MANUAL

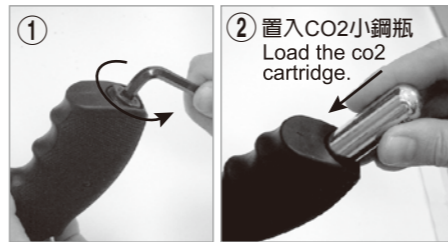
KWC KIEN WELL TOY INDUSTRIAL CO., LTD
www.kwcgun.com

台南市仁德區義林路168巷89號
NO.89, LN. 168, YILIN RD.,
RENDE DIST., TAINAN CITY
71752, TAIWAN (R.O.C.)
TEL : +886-6-2798175
FAX : +886-6-2798176
sales@kwcgun.com
www.kwcgun.com

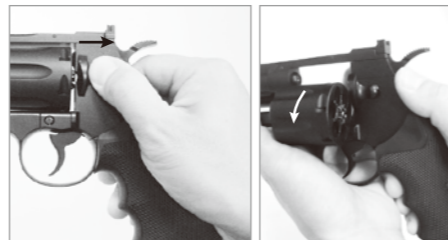


射擊/SHOOTING

射擊前的準備 BEFORE SHOOTING



1. 使用六角扳手反時針方向取出彈匣底內件。
Use hexagonal wrench to remove the magazine cap by counter clockwise.
2. 置入CO2小鋼瓶
Load the co2 cartridge.
3. 使用六角扳手反時針方向取出彈匣底內件。
Use hexagonal wrench to remove the magazine cap by counter clockwise.
4. 逆時針轉出彈匣底內件後，置入小鋼瓶，再以順時針方向鎖緊彈匣底內件。當刺破鋼瓶出氣時，請快速鎖緊。
Turn the magazine cap a out counter-clockwise and place CO2 cartridge inside the magazine. Rapidly turn the screw clockwise when piercing the cartridge in the magazine.



5. 右手先將彈倉卡榫往右移，左手再托出彈倉。
Press the magazine release button and push the magazine out from the backside of the gun.



6. 將6顆子彈頭都各放入BBs一顆。
Load only one BB in each bullet.
7. 再把6顆子彈殼放入裝彈器。
Place six bullets in the speedloader.



8. 按住旋鈕往上推到底，再順時針方向轉動，聽到“喀”一聲就固定住彈殼。
Push the speedloader to the end, and turn clockwise until you head a “click” sound to fix the bullets.



9. 裝彈器固定住子彈後，向彈倉6孔位放入到底，就會自動進入子彈定位。
Once six bullets are in speedloader, just push the speedloader into the magazine, and bullets will automatically loaded.



10. 瞄準目標物扣引扳機，即可擊發。
Aim the target and pull the trigger.
- ※注意：在長期不使用的狀態下，請將彈匣內的氣體洩放掉。
※CAUTION：Release all of the gas in the magazine when it is unused in long-term period.

安全裝置 SAFETY

可射擊
SAFETY OFF



保險
SAFETY ON



故障/BREAK DOWN

故障的原因與排除 BREAK DOWN FAQ

1. 不良的B.B彈是造成卡彈的原因，請使用品質優良的KWC B.B彈。
Bad quality BB is the main reason to cause BB jam. Please use the best quality KWC BB to avoid jamming problem.
2. 當卡彈時，請盡可能先取出彈匣，再以不傷槍管的軟質細棒（不可大於5.9mm直徑），從槍口置入清除。
When you meet with 6 mm BB jam, please release the magazine at first and use the soft stick (no bigger than 5.9 mm) to clean the barrel out.
3. 空擊發易造成零件損耗，請避免此動作。
Please avoid dry firing, for it could cause parts deformed or damage.

4. 使用一段時間後，請再次用中性矽油脂潤滑撞針及扳機軸心。
Please spray the lubricant into firing pin and trigger pin.



⚠ WARNING

請務必嚴格遵守 使用說明指導書
READ THIS OWNER'S MANUAL COMPLETELY.

此低動能遊戲用槍是針對喜愛射擊運動的消費者所開發。避免因使用方法不正確或改造所發生的故障或事故，請務必詳讀說明書，正確的操作享受愉快的射擊運動。

1. 除了發射時外，不要將手指頭掛在板機上。
2. 選擇安全與適當標靶
3. 在非使用期間，請保持保險關閉且退彈的狀態，就算在非使用狀態，也要如同其已裝彈。
4. 如任何的機械產品，槍的保險也可能失效。即使在保險關閉的狀態下也請小心的操作此槍，請勿將槍口對人。
5. 千萬不要對堅硬或平坦表面、水面射擊，以避免跳彈。
6. 請妥善保管產品在未未成年孩童無法伸手取得的場所。
7. 每次使用前後都應該檢查擋彈物，假如擋彈物表面有磨損失效或是反彈時請停止使用。
8. 請使用高品質BB彈，請勿使用①口徑大於6mm ②表面不平滑的③重複使用過的BB彈④非本說明書指名的發射物。
9. 最高的使用及儲藏CO2小鋼瓶環境為50°C (122°F) 以內，高溫可能會造成CO2小鋼瓶過熱甚至爆炸。
10. 檢查任何掉落之槍枝，以確保未影響其功能。

This airsoft is intended for recreational or training purposes. To prevent improper handling, modification or alteration causing malfunction or accident, please read the owner's manual carefully. Enjoy the pleasant shooting experience by proper operation.

1. Do not put your finger on the trigger except shooting.
2. Please choose safe and proper target.
3. Please always keep the airsoft on safe and unloaded when not using.
4. Like all mechanical devices, an airsoft safety can fail. Always handle the airsoft safely even when the safety is “on safe”. Never point the airsoft at any people.
5. Avoid ricochet. Never shoot at a hard or flat surface or at water.
6. Keep the airsoft out of reach for small children.
7. Your backstop should be inspected for wear before and after each use. Discontinue use of the backstop if surface shows signs of failure or ricochet.
8. Only use high quality BB. Never use ①BB diameter larger than 6mm ②BB with unsmoothed surface ③reused BB that has been fired ④incorrect projectiles not design for this airsoft.
9. Do not expose CO2 cartridges to heat or store them at temperatures above 50° C (122° F). CO2 cartridges may over heat or explode at temperatures above 50° C (122° F).
10. Check any gun that has been dropped to ensure that its function has not been affected.

! WARNING 警告

AAKCCD66-67-68 系列 零件表

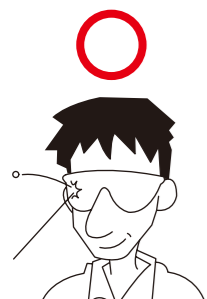
AAKCCD66-67-68 SERIES PARTS LIST

AAKCCD66-67-68 系列 零件分解圖

AAKCCD66-67-68 SERIES EXPLODED VIEW

★使用低動能遊戲用槍前，請務必戴上保護眼鏡或面罩。

★Always wear eye protection when using airsoft.



★使用低動能遊戲用槍前，請務必詳讀說明書內容。

★Read the owner's manual before using the airsoft.



★不可攜帶低動能遊戲用槍在公共場所行走，請務必裝在袋子或盒子內。

★Always transport an airsoft in a locked carrying case. Make sure it is unloaded and on safe.

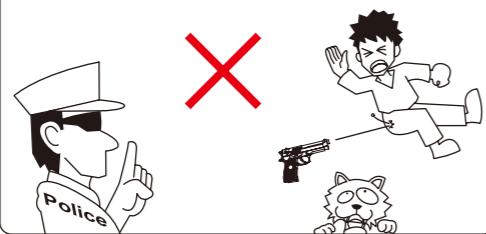


★請不要由槍口向內探視。



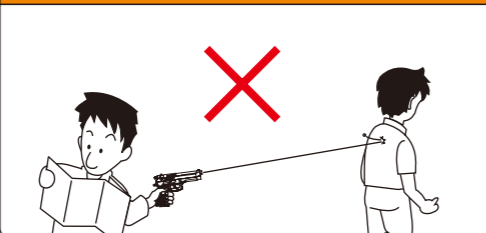
★請不要在公開場合使用低動能遊戲用槍，也請不要拿低動能遊戲用槍對準人或動物。

★Never brandish or aiming this airsoft at any people or domestic animals. Brandish this airsoft in public is dangerous and may be a crime.



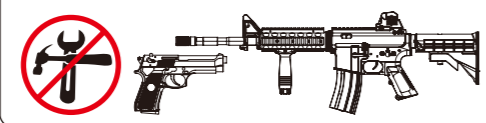
★請確認後再發射BB彈方向，附近無人或動物存在。

★Always be aware of your surrounding before and during shooting and select a safe area for target practice.

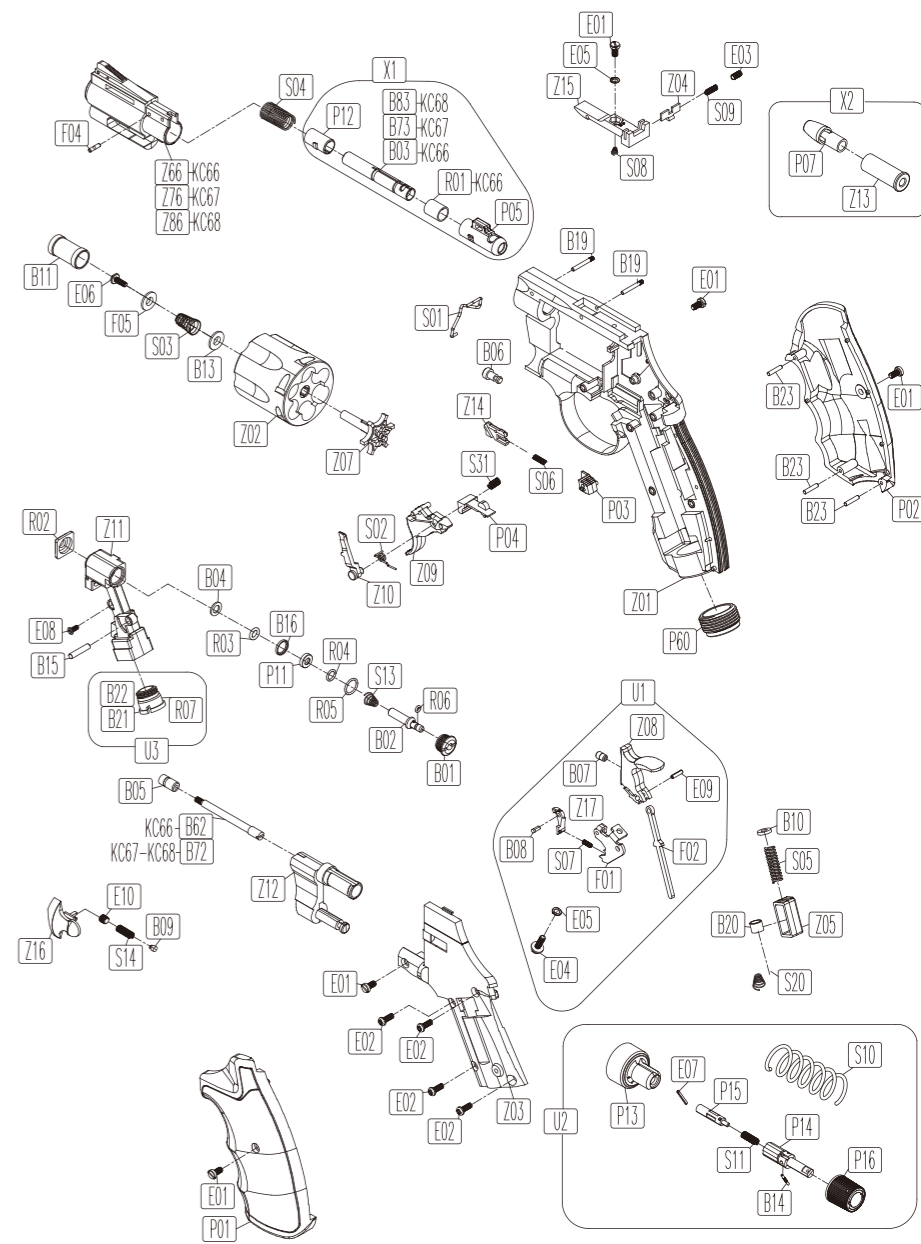


★不可任意改造或加工低動能遊戲用槍，私自改造加工會造成產品損壞、保固失效，導致使用上不安全，甚至觸法送辦。

★Disassemble, modify, or alter of your airsoft may cause malfunction, void your warranty and may make it unsafe to use.



圖號	零件名稱	UNIT	圖號	零件名稱	UNIT	圖號	零件名稱	UNIT
P01	槍柄(左)	GRIP (L)	R03	O型環S-5	O-RING S-5	S05	擊鐵導桿壓簧	HAMMER GUIDE SPRING
P02	槍柄(右)	GRIP (R)	R04	O型環1X5	O-RING 1X5	S06	撞針滑塊壓簧	FIRING PIN SLIDE SPRING
P03	保險	SAFETY	R05	O型環S-8	O-RING 1X5	S07	擊鐵卡榫壓簧	HAMMER CATCH SPRING
P04	彈倉定位件	CYLINDER LOCK	R06	O型環1X2	O-RING 1X2	S08	照門底座壓簧	REAR SIGHT BASE SPRING
P05	槍管套	BARREL CONNECTOR	R07	O型環S-10	O-RING S-10	S09	照門壓簧	REAR SIGHT SPRING
P12	槍管後內套	BARREL CAP				S13	心棒壓簧	VALVE SPRING
P11	氣閥蓋迫緊	VALVE CAP PACKING	B01	心棒蓋	VALVE CAP	S14	彈倉卡榫壓簧	LATCH SPRING
			B02	心棒	VALVE	S20	擊鐵導件內套壓簧	HAMMER SPRING
Z01	本體	FRAME	B03	KC-66槍管	BARREL(2.5")	S31	彈倉定位件壓簧	CYLINDER LOCK SPRING
Z02	彈倉	CYLINDER	B04	心棒華司	VALVE WASHER	E01	螺絲M3X6黑	SCREW M3X6
Z03	本體側蓋	SLIDE PLATE	B05	棘輪軸帽	EXTRACTOR ROD CAP	E02	螺絲M3X8黑	SCREW M3X8
Z12	彈倉支座	CRANE	B06	彈倉中心軸	CYLINDER PIN	E03	螺絲3.0X6黑	SCREW 3.0X6
Z04	後準星	SEAR SIGHT	B07	擊鎚	HAMMER	E04	螺絲M3X10*P0.5	SCREW M3X10*P0.5
Z15	後準星座	SEAR SIGHT BASE	B08	擊鐵配件軸	HAMMER ACCESSORY PIN	E05	彈簧墊圈	WASHER
Z16	彈倉卡榫	LATCH	B09	彈倉卡榫軸	LATCH PIN	E06	螺絲M2.6X8*P0.45	SCREW M2.6X8*P0.45
Z14	撞針滑塊	FIRING PIN SLIDE	B10	擊鐵導桿華司	HAMMER GUIDE WASHER	E07	彈簧銷	SPRING PIN
Z17	擊鐵配件	HAMMER ACCESSORY	B11	彈倉支座管	CYLINDER ROLLER SLEEVE	E08	螺絲2.3X6束黑熟	SCREW 2.3X6
Z05	擊鐵導桿導件	HAMMER GUIDE	B13	彈倉支座華司	CRANE WASHER	E09	彈簧銷	SPRING PIN
Z08	擊鐵	HAMMER	B15	擊鐵下部軸	HAMMER PIN	E10	螺絲M4.0*6L*P0.7 黑	SCREW M4.0*6L*P0.7
Z09	扳機	TRIGGER	B16	氣閥蓋迫緊華司	VALVE CAP WASHER	U1	擊鐵組件	HAMMER UNIT
Z07	棘輪	EXTRACTOR (RATCHET)	B19	KC-66軸(照門用)	PIN(FRONT SIGHT)	U2	裝彈器組件	SPEEDLOADER UNIT
Z10	棘輪爪	RATCHET HAND	B20	擊鐵導件內套	HAMMER GUIDE SLEEVE	U3	氣瓶頂針組件	INNER VALVE UNIT
Z11	氣槽主體	GAS FRAME	B62	KC-66棘輪軸-2.5in	EJECTOR ROD(2.5")	X1	內槍管組件	INNER BARREL UNIT
Z66	KC-66本體前部-2.5in	FRONT PART OF BODY(2.5")	B72	KC-67棘輪軸	EJECTOR ROD(4")	X2	彈殼組件	METAL SHELLS UNIT
Z76	KC-67本體前部-4in	FRONT PART OF BODY(6")	B73	KC-67槍管	BARREL(4")			
Z86	KC-68本體前部-6in	FRONT PART OF BODY(4")	B83	KC-68槍管	BARREL(6")			
P60	彈匣底內件	MAGAZINE BOTTOM CAP	B21	氣瓶頂針迫緊	INNER VALVE PACKING			
F01	擊鐵下部	HAMMER BASE	B22	氣瓶頂針	INNER VALVE			
F02	擊鐵導桿	HAMMER GUIDE	B23	KG-61軸(槍柄)	PIN (GRIP)			
F04	槍管套軸	BARREL CONNECTOR PIN						
F05	棘輪華司	EXTRACTOR WASHER	S01	撞針	FIRING PIN			
			S02	棘輪爪扭簧	HAND SPRING			
R01	子彈迫緊	RUBBER CHAMBER	S03	棘輪軸壓簧	EJECTOR ROD SPRING			
R02	氣嘴迫緊	GAS ROUTE PACKING	S04	槍管套壓簧	BARREL CONNECTOR SPRING			



※零件有時為了改良而不經預告變更。
Spare parts may be modified for quality improvement
And such modification may be without advance notice.

Do not display this pistol in public—it may confuse people and may be a crime.
請不要忘了，雖然自己知道這只是玩具，但不知道的人，會以為這是真槍。